

FLOW SIGHT GLASS GAUGE

T SERIES – Thread Connection with Spring Paddle

The flow sight glass was designed with spring paddle for easy observation of flowing fluid from any direction.

Technical Data

Service: – Compatible gas and liquid – Water treatment system
 – Industrial flow system – Double window indication

Material: Body– SS304, SS316, SS316L; Paddle–SS316; Spring –SS316
 Gauge–Tempered glass; Gasket–Teflon, Gore Tex, Graphite, Sigma 533

*Gasket: Graphite unsuitable for TA type.

Max working temperature: 150°C (Teflon), 300°C (Gore-Tex)

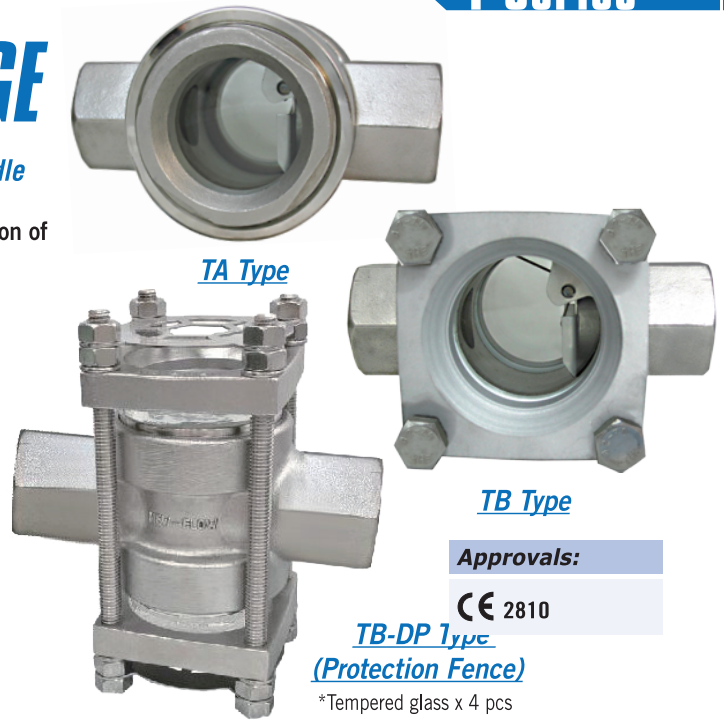
Max working pressure: TA type: 10kg/cm² @25°C water;

TB / TB-DG (double glasses) / TB-DP (protection fence) type:

Available for 15, 25 and 40kg/cm² @25°C water

Optional: •Protection Fence / SS304: Protect the glass plate against damage from outside

•Tempered glass x 4pcs: more protection from outside



Approvals:

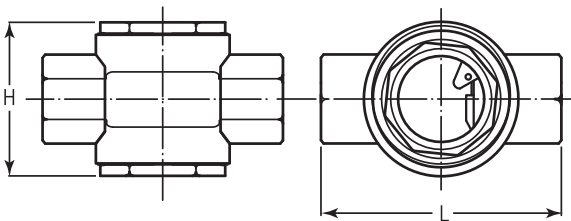
CE 2810

TB-DP Type
 (Protection Fence)

*Tempered glass x 4 pcs

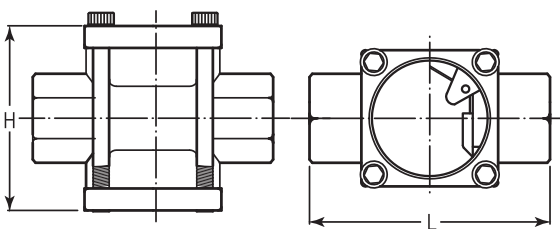
Dimension-mm

(A) TA Type



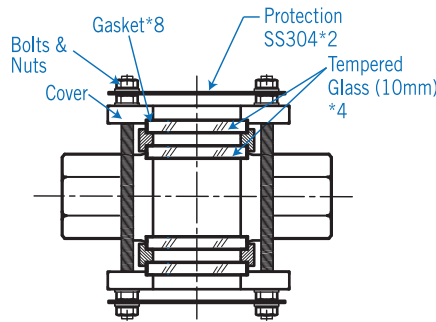
Range Size	15A	20A	25A	40A	50A
L	114	114	114	130	150
H	72	72	72	120	136

(B) TB Type

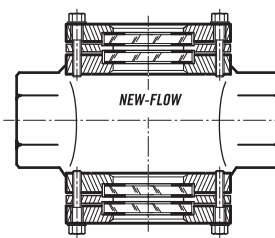


Range Size	15A	20A	25A	40A	50A
L	114	114	114	130	150
H	72	72	72	115	129

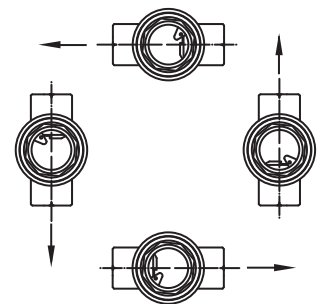
(C) TB-DP Type (Protection Fence)



(D) TB-DG Type (Double Glasses)



Mounting Position



Ordering Information

TA/ TB/ TB-DP / TB-DG	Code	Body Material	Code	CE Mark Request	
↓	↓	(A) SS304 (B) SS316 (C) SS316L	3	Stamp	
		Code	4	Without	
		(1) 15A (2) 20A (3) 25A (4) 40A (5) 50A		Code	Max. Working Pressure
		Code	Connection Thread	0	10 kg/cm ² (for TA type only)
		(1) NPT (2) PF (3) Option		1	15 kg/cm ² (for TB type)
↓	↓	Code	Gasket Material	2	25 kg/cm ² (for TB type)
		(1) Teflon (2) Gore-Tex (3) Graphite (unsuitable for TA type) (4) Sigma 533		3	40 kg/cm ² (for TB type)
↓	↓				
			+	Complete Ordering Code	