

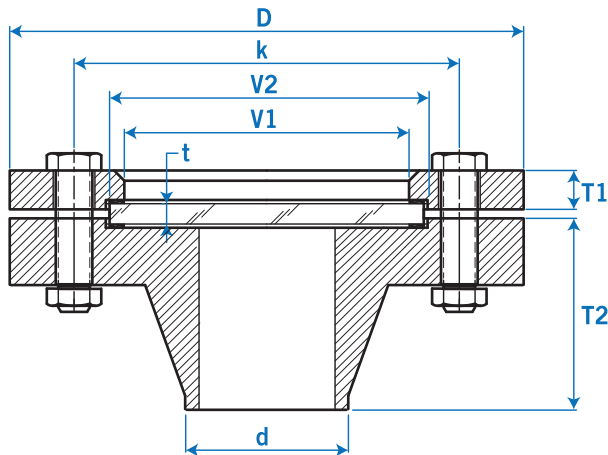
SIGHT GLASS SOG SERIES-100

**Weld-In for Tank, Pipe, and Vessel
Low Pressure System Used
Working with Fluid and Gas Available**

Technical Data

Size: 1½"~8" available
Rating: ANSI 150#, ANSI 300#, PN10 and PN16 available
Pressure Limited: Up to 16 Bar(Kg/cm²) @25°C water; depending on request size
Temperature Limited: Up to 280°C
Material: Wetted Parts & Body– SS304, SS316 and Others on request;
 Sight Glass– Transparent Tempered Glass; Bolt– SS304 and Others on request;
 Gasket– Non-Asbestos, and Others on request

Dimensions

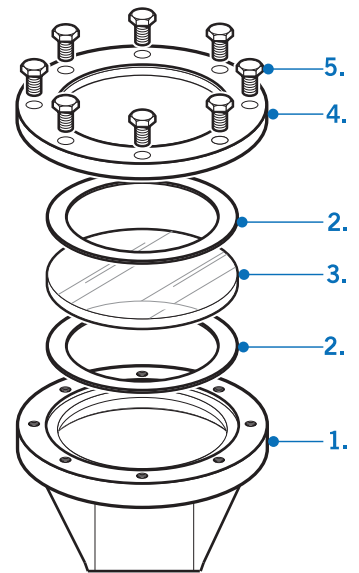


NOTE.
 (*) For size 5"~8":
 Pressure limit can be 16 bar as
 the tempered glass thickness (t)
 is 30mm.

unit=mm

Size (inch)	1½"	2"	2½"	3"	4"	5"	6"	8"
Pressure Limit (bar)	16	16	16	16	16	10/16(*)	10/16(*)	10/16(*)
V1 (Visible Diameter)	52	62	82	92	107	152	172	222
V2 (Visible Diameter)	70	80	100	110	125	175	200	250
t (Tempered Glass Thickness)	19	19	19	19	25	30	30	30
Glass	70	80	100	110	125	175	200	250
D (Flanges O.D)	127	152.4	177.8	190.5	228.6	254	279.4	342.9
d	48.3	60.5	73.2	88.9	114.3	141.2	168.4	219.2
k	Dimensions by flange rating							
T1	17.5	19.1	22.3	23.9	23.9	23.9	25.4	28.6
T2	61.9	63.5	69.9	69.9	76.2	88.9	88.9	101.6
Bolts No.	4	4	4	4	8	8	8	8
Bolts Size	1/2	5/8	5/8	5/8	5/8	3/4	3/4	3/4
Bolts Length	---	---	---	---	100	---	---	---

Parts List



Item	Part Name
1.	Body (Flange)
2.	Gasket
3.	Tempered Glass
4.	Cover
5.	Bolt

Ordering Information

SOG	Code	Type
		100
	Code	Body Material
	1	SS304
	2	SS316
	3	Option
	Code	Size
	(A)	1½"
	(B)	2"
	(C)	2½"
	(D)	3"
	(E)	4"
	(F)	5"
	(G)	6"
	(H)	8"
	Code	Flange Rating
	(1)	150#RF
	(2)	300#RF
	(3)	PN10
	(4)	PN16
	(5)	Other
SOG		Complete Ordering Code