

MINI SIZE MAGNETIC LEVEL GAUGE SN SERIES

Technical Data

Application for non and low viscosity liquids system

In equipment for oil, food, beverages, medical, petrol chemical, water

Chamber size: 1" Pipe, SCH10

Connection size: 1/2" ~ 1"

Connection rating: Thread type: BSP(PF), NPT (with union) available. Special size on request.
Flange type: JIS, ANSI, DIN rating available. Special size on request.

Center to center length: Maximum 2 meters

Material: Chamber & Wetted parts—SS316 ; Indicating case—SS316
Indicating strips—Plastic

Indicating gauge orientation adjustable

Pressure limited: 10 kg/cm² (150psi)

Temperature limited: -20°C ~ +90°C

Sp.Gr.: 0.75 Low limited

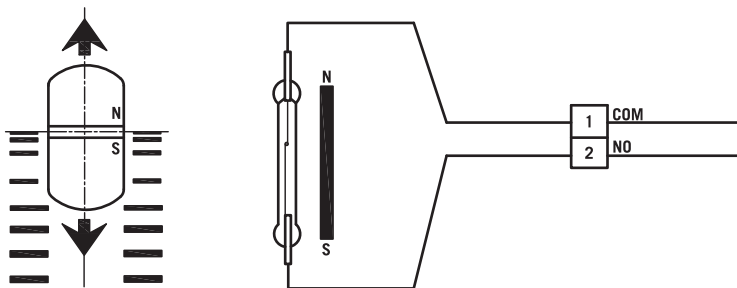
Reed switch type and transmitter assembly available

Switch Function

Reed Switch Type (SPST)

Alarm Switch: form A N.O. type bistable switch

Rating: AC 125V 0.5A / DC 100V 10W / Max. DC 250V < 40 mA



Approvals:



Transmitter Type

Potentiometer I/P

Output Signals: 4~20mA DC,
Load resistance R_L (max) = $(V_s - 10) \times 50 \Omega$ (2-Wire)

Input Range: 100 Ω to 45K Ω (3-Wire)

Output Adjustment Range: Zero adjustment 0~15%

Accuracy: $\pm 0.1\%$ F.S (at 23°C)

Linearity: $\pm 0.1\%$ F.S

Supply Voltage: 10~30V DC

Temp. Coefficient: $\pm 0.02\%/^\circ\text{C}$

Operating Temp.: -5 ~ +70/ $^\circ\text{C}$

Operating Humidity: 0~90% RH

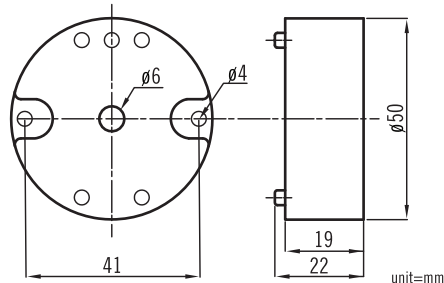
Terminal: DIN type

Installation: Head and wall mounting

Case Material: Nylon 6 resin (Black)

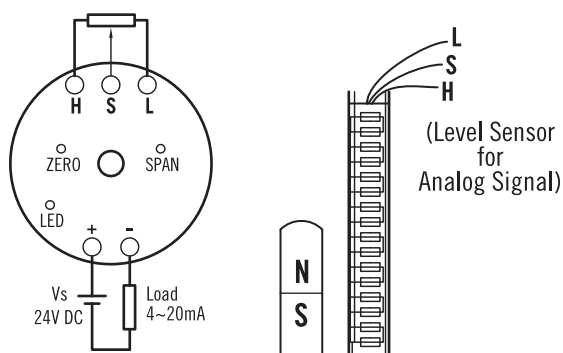
Weight: about 50 grams

Dimensions



GL-T

Sketch Terminal & Level Indicating Strip



Features

- ISO 9001 and CE certificate
- High immunity to external noise
- LED indication and DC power polarity protection
- High reliability, lasting durability and low cost

Application

- Position of valve, damper and other devices

