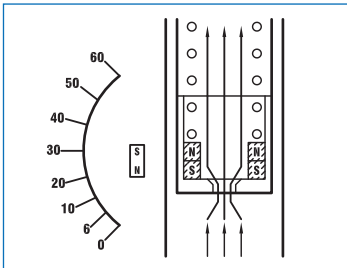


FLOW SWITCH AND INDICATOR OF100 SERIES

Technical Data

- Piston type for high viscosity**
- Fluid:** Water, oil, other liquid available; Gases
- Flow Range:** 40~30,000 l/h (at Water); 1~740 Nm³/h (at Air)
- Accuracy:** ±3% F.S, On request: ±2.5% F.S
- Size:** ¼" to 2½"
- Connection Type:** NPT, Flange type on request
- Working Limits:** Temperature: -40°C to +180°C
- Working Pressure:** 30 kg/cm²
Option—100 kg/cm² for 1" or less
Option—200 kg/cm² for 1½" or bigger
- Protection Class:** IP66, Explosion proof
- Housing Material:** NS, CS, MS type— Aluminum Alloy
ES type— SS316
- Lens Material:** Safety glass
- Mounting:** Vertical, Horizontal available
- Material:** Wetted parts SS316; Teflon lining float for Gases application
- Alarm Switch:** Micro switch, Inductive switch available

Principle



Approvals:

TD0400TJ
 工電(2015)第00151號
 (ITRI)2017第07-00302號



NS Type (Indicating only)



CS Type (With inductive switch)



ES Type (Indicating only)



MS Type (With micro or reed switch)

Patent No.

GYB19:1793X
 SIL2 Certified

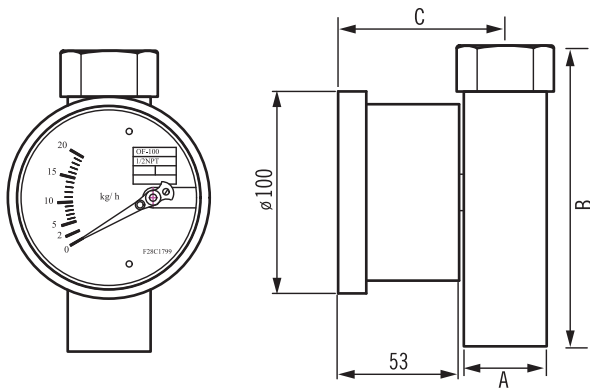
(PED: 2014/68/EU)

Taiwan: M285697 / M338982 / M332836
China: 1187801

Dimensions

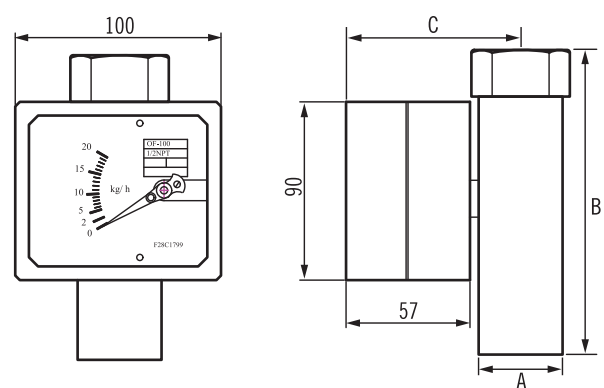
IP68

ES Type
Housing Material: SS316



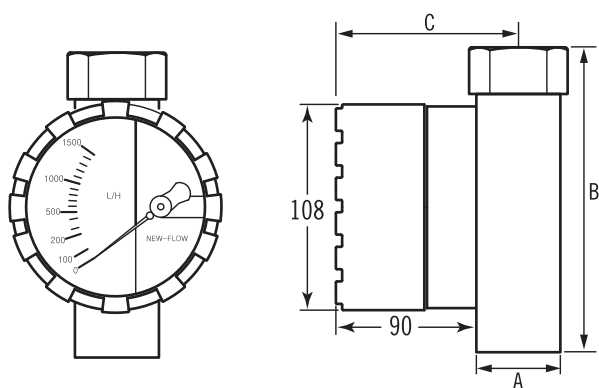
IP66

CS, NS Type
Housing Material: Aluminum alloy



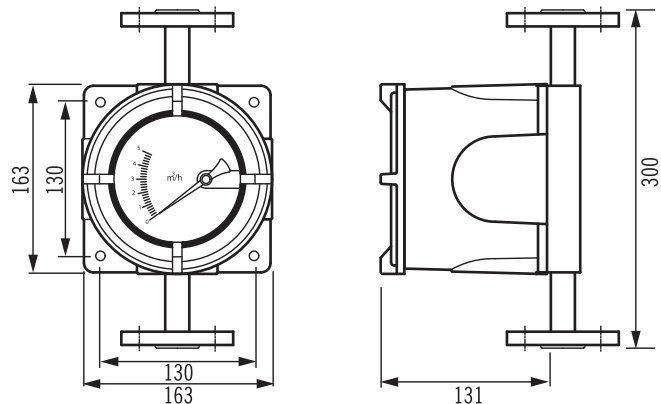
IP66

MS Type
Housing Material: Aluminum alloy



Explosion Proof

- Housing Material:** Aluminum alloy, SS316 available
- Explosion Proof Certificate on Housing Only
 - Taiwan Explosion Proof Certification



unit=mm

unit=mm

