

FLANGE TYPE THERMOWELLS

Technical Data

Welded type: WSF, WLF

Drilled bar stock type: BSF, BLF, BTF, BTLF, BPSF, BPLF

Material: SS304, SS316, SS316L, Monel, Hastelloy C 276, Brass, Carbon Steel, Titanium (special material available upon request)

Process connection: 1/2" ~ 4" flange available, flange rating— ANSI, DIN, JIS available (special flange upon request)

Instrument connection: 1/2"NPT, 3/4" NPT Female available (special thread upon request)

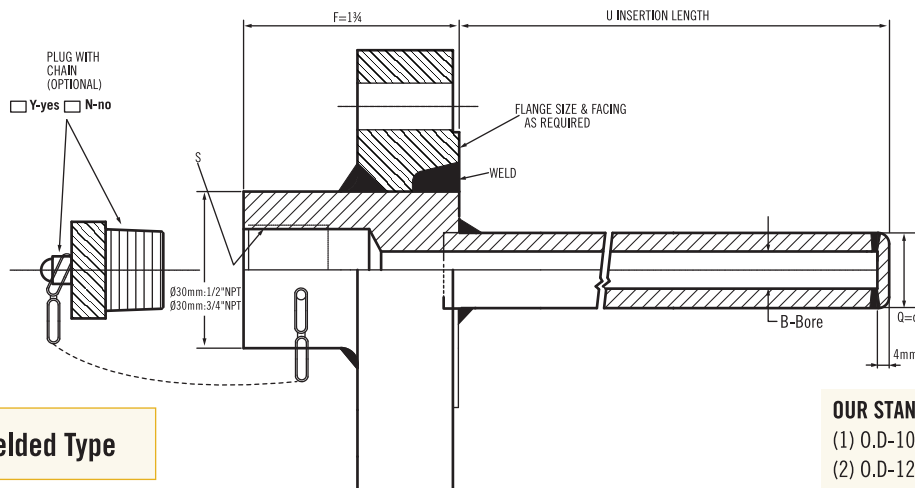


Flange Wells Series

* F: Length is suitable for flange size 3/4", 1", 1 1/2", 2", and flange rating 150# & 300#.

Other size and rating (F) length is by makers standard.

Model : WSF(Welded Standard Flange Type)



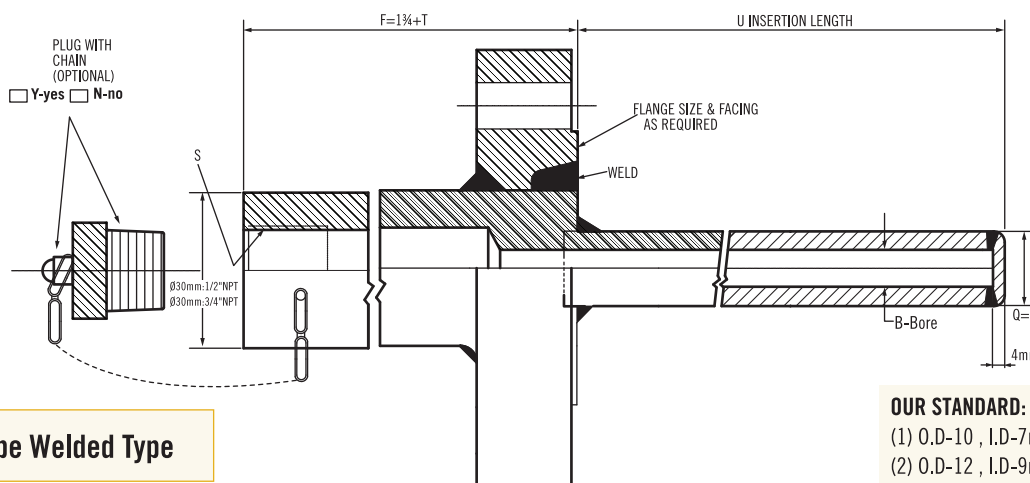
Tube Welded Type

OUR STANDARD:

- (1) O.D-10 , I.D-7mm
- (2) O.D-12 , I.D-9mm
- (3) O.D-14 , I.D-10mm

No custom request for this type!

Model : WLF(Welded Lag Flange Type)



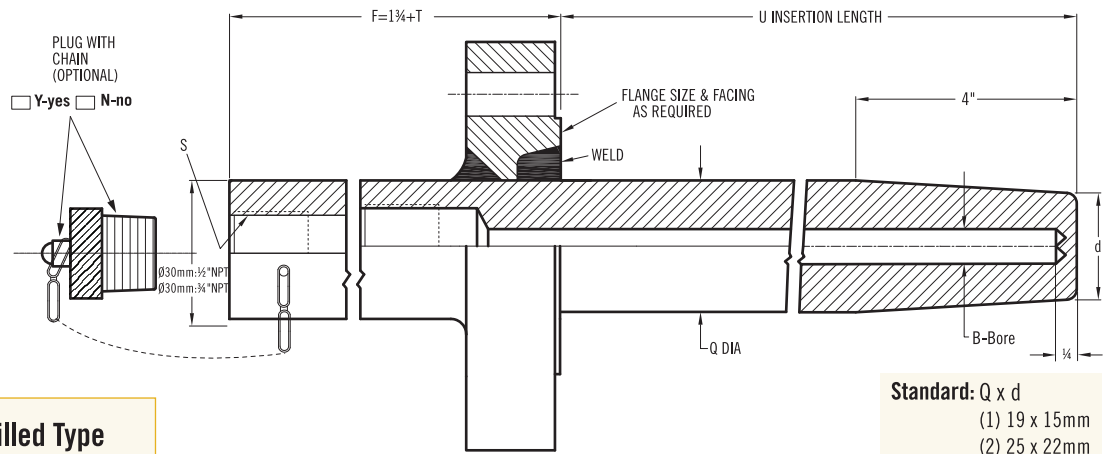
Tube Welded Type

OUR STANDARD:

- (1) O.D-10 , I.D-7mm
- (2) O.D-12 , I.D-9mm
- (3) O.D-14 , I.D-10mm

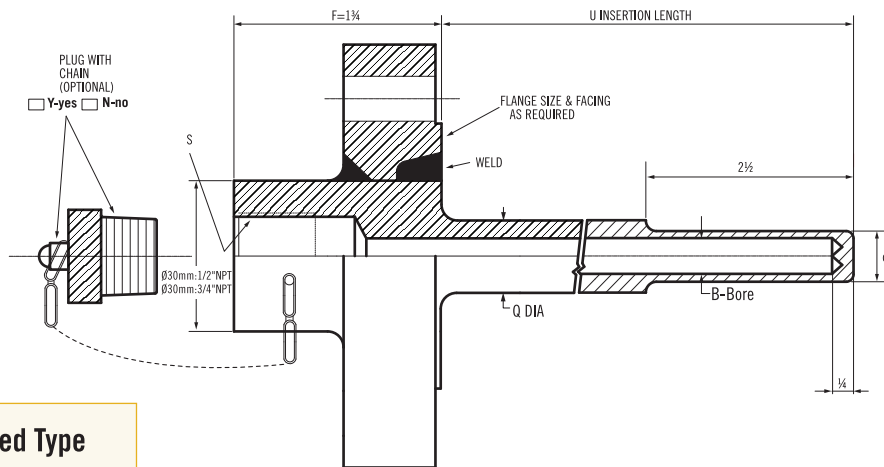
No custom request for this type!

Model : BTLF(Tapered Lag Extension Flange Type)



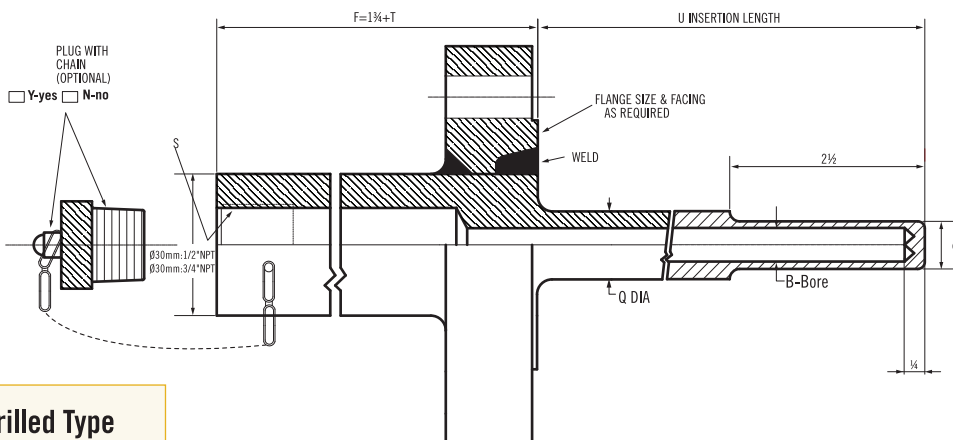
Bar Drilled Type

Model : BPSF(Stepped Standard Flange Type)



Bar Drilled Type

Model : BPLF(Stepped Lag Extension Flange Type)



Bar Drilled Type

