

FLOW SIGHT GLASS GAUGE

F SERIES Flange Connection With or Without Spring Paddle

The flow sight glass was designed with or without spring paddle for easy observation of flowing fluid from any direction.

Technical Data

Service: Compatible gas and liquid; Water treatment system; Industrial flow system; and Double windows indication

Material: Body- SS316, SS304, SS316L, SS304L, and Duplex S.S-UNS J92205 on request only for without paddle type ; Paddle- SS316; Spring- SS316; Gauge- Tempered glass; Gasket- Teflon, Gore-Tex, Graphite, Sigma 533

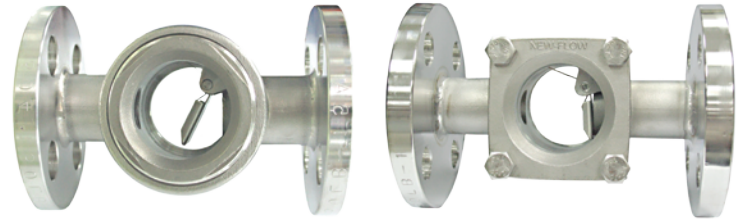
*Gasket: Graphite unsuitable for FA type.

Max. working temperature: 200°C (option: 300°C available)

Max. working pressure: • FA type: (for size of 15A to 50A): 10 kg/cm² @25°C water

• FB / FB-DG (double glasses) / FB-DP (protection fence) type: (for size of 15A to 50A): 15 kg/cm² @25°C water ; 25 and 40 kg/cm² are on request (for size of 65A to 100A): 15 kg/cm² @25°C water (for size of 125A to 250A): 10 kg/cm² @25°C water

Optional: •Protection Fence / SS304: Protect the glass plate against damage from outside
•Tempered glass x 4pcs: more protection from outside

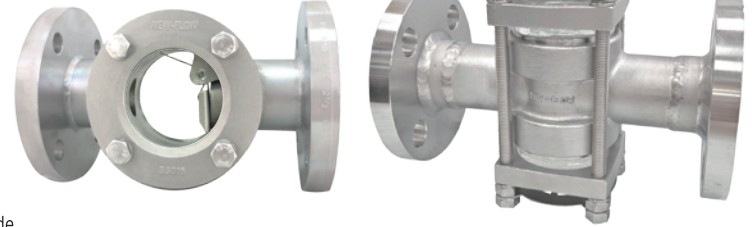


FA Type

FB Type (15A~50A)

Approvals:

CE 2810



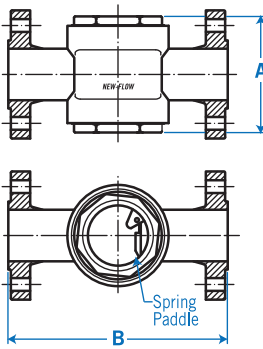
FB Type (65A~250A)

FB-DP Type (Protection Fence)

*Tempered glass x 4 pcs

Dimension-mm

FA Type (with paddle): 15A~50A

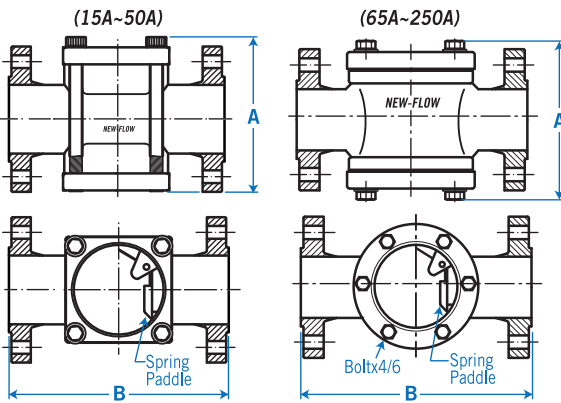


Wetted Parts Material Code		1	2	3	4	6
Material	Body (Flange)	SS316	SS304	SS316L	SS304L	Duplex S.S UNS J92205
	Cover	SS316	SS304	SS316	SS316	SS316

*Duplex S.S-UNS J92205 only for drip tube type (without paddle).

Range Size	15A	20A	25A	32A	40A	50A
A	114	114	114	114	130	150
B	130	130	160	160	200	220
B (option)	140	140	140	140	180	220

FB Type (with paddle): 15A~250A



Wetted Parts Material Code		1	2	3	4	6
Material	Body (Flange)	SS316	SS304	SS316L	SS304L	Duplex S.S UNS J92205
	Cover	SS316	SS304	SS316	SS316	SS316

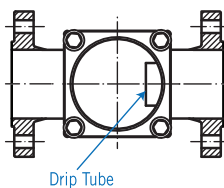
*Duplex S.S-UNS J92205 only for drip tube type (without paddle).

Range Size	15A	20A	25A	32A	40A	50A	65A	80A	100A	125A	150A	200A	250A
A	72	72	72	115	115	129	164	183	212	247	276	345	410
B	130	130	160	200	200	220	270	270	320	380	420	500	730
B (option)	140	140	140	180	180	220	260	260	310	-	-	-	-
B (300LB)	160	160	160	-	-	-	-	-	-	-	-	-	-

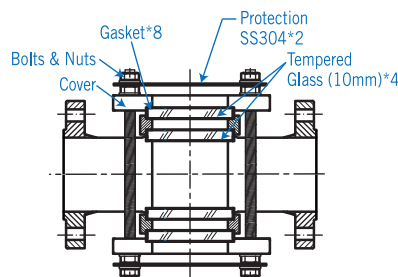
*250A is only for drip tube type.

*UNS J92205 is unavailable for 250A .

Drip Tube Type (without paddle)

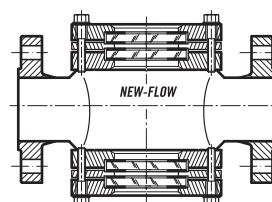


FB-DP Type (Protection Fence)

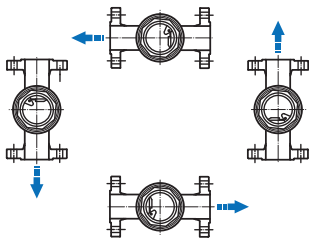


*UNS J92205 is available for 15A to 25A.

FB-DG Type (Double Glasses)



Mounting Position



Flow Range Table

Item Code	Flow Range	Connection Size	Item Code	Flow Range	Connection Size
A	0~1.5 M ³ /H	½"(15A), ¾"(20A), 1"(25A)	F	0~12 M ³ /H	1¼"(32A), 1½"(40A), 2"(50A)
B	0~3 M ³ /H	½"(15A), ¾"(20A), 1"(25A)	G	0~16 M ³ /H	1¼"(32A), 1½"(40A), 2"(50A)
C	0~4 M ³ /H	½"(15A), ¾"(20A), 1"(25A)	H	0~18 M ³ /H	2"(50A)
C-1	0~5 M ³ /H	¾"(20A)	I	0~24 M ³ /H	2"(50A)
D	0~8 M ³ /H	1¼"(32A), 1½"(40A), 2"(50A)	J	0~22 M ³ /H	3"(80A), FB type available only
E	0~10 M ³ /H	1¼"(32A), 1½"(40A), 2"(50A)	K	0~200 M ³ /H	5"(125A), FB type available only

Ordering Information

FA/ FB/ FB-DG/ FB-DP/	Code	Type
	W	With Paddle
	N	Without Paddle (Drip Tube)– scale unavailable
	Code	Wetted Parts Material
		(1) SS316 (2) SS304 (3) SS316L (4) SS304L (5) option (6) Duplex S.S - UNS J92205 (only for drip tube type)
	Code	Size
		(1) 15A (2) 20A (3) 25A (4) 40A (5) 50A (6) 65A (7) 80A (8) 100A (9) 125A (10) 150A (11) 200A (12) 32A (13) 250A
	Code	Connection Rating
		(1) JIS 10K (2) JIS 20K (3) ANSI 150# (4) ANSI 300# (5) PN10 (6) PN16 (7) PN25 (0) option
	Code	Gasket Material
		(1) Teflon (2) Gore-Tex (3) Graphite (unsuitable for FA type) (4) Sigma 533
	Code	CE Mark Request
	3	Stamp
	4	Without
	Code	Flow Range
	A~J	Please refer to the Flow Range Table, and fill out the item code of requested range directly.
	N	No need flow range scale
		Complete Ordering Code