

# FLOW METER SIGHT GLASS GAUGE

## FT SERIES – Thread Connection

The flow meter sight glass was designed with spring paddle to indicating flow rate for easy observation of flowing fluid from any direction.

### Technical Data

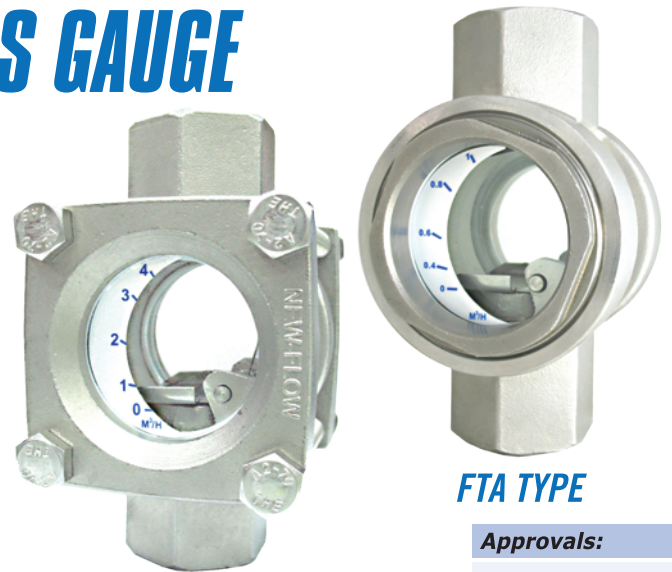
**Service:** – Compatible gas and liquid – Water treatment system  
 – Industrial flow system – Double window indication

**Material:** Body– SS304, SS316, SS316L available;  
 Paddle– SS316; Spring– SS316  
 Gauge– Tempered glass; Gasket– Teflon or Gore Tex

**Max. working temperature:** 80°C

(\*Min. working temperature for FTB Type is “ -20°C ”.)

**Max. working pressure:** FTA type– 10 kg/cm<sup>2</sup> at 25°C water  
 FTB type– 15 kg/cm<sup>2</sup> at 25°C water



**FTB TYPE**

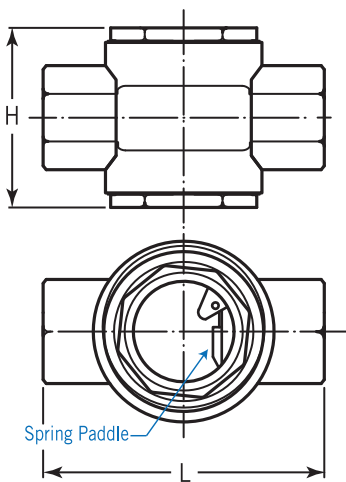
**FTA TYPE**

**Approvals:**

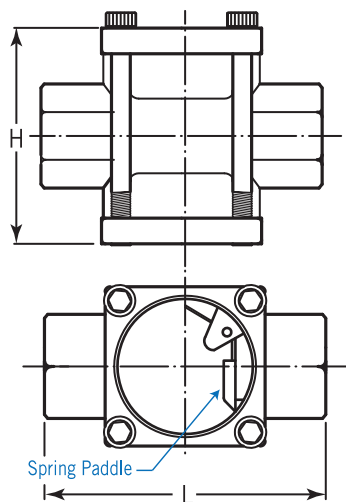
CE 2810

### Dimensions

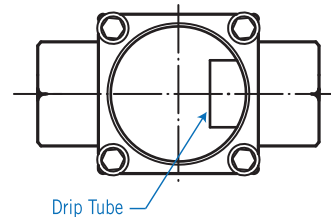
**FTA Type (with paddle)**



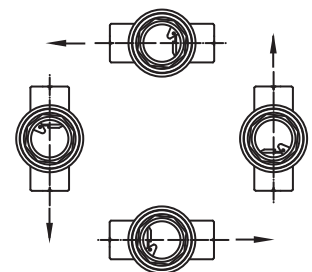
**FTB Type (with paddle)**



**Drip Tube Type (without paddle)**



### Mounting Position



Size	15A	20A	25A	32A	40A	50A
L	114	114	114	130	130	150
H	72	72	72	120	120	136

Size	15A	20A	25A	32A	40A	50A
L	114	114	114	130	130	150
H	72	72	72	115	115	129

### Ordering Information

FTA/FTB	Code	Type
	<b>W</b>	With Paddle
	<b>N</b>	Without Paddle (Drip Tube)– scale unavailable
	<b>Code</b>	<b>Material</b>
		(A) SS304 (B) SS316 (C) SS316L
	<b>Code</b>	<b>Size</b>
		(1) 15A (2) 20A (3) 25A (4) 32A (5) 40A (6) 50A
	<b>Code</b>	<b>Connection Thread</b>
		(1) NPT (2) PF (3) option
	<b>Code</b>	<b>Flow Range</b>
	<b>A~I</b>	Please refer to the Flow Range Table, and fill out the item code of requested range directly.
	<b>N</b>	No need flow range scale
	<b>Code</b>	<b>CE Mark Request</b>
	<b>3</b>	Stamp
	<b>4</b>	Without
<b>FTA/FTB</b>		<b>Complete Ordering Code</b>

### Flow Range Table

Item Code	Flow Range	Connection Size
<b>A</b>	0~1.5 M <sup>3</sup> /H	½"(15A), ¾"(20A), 1"(25A) available
<b>B</b>	0~3 M <sup>3</sup> /H	½"(15A), ¾"(20A), 1"(25A) available
<b>C</b>	0~4 M <sup>3</sup> /H	½"(15A), ¾"(20A), 1"(25A) available
<b>D</b>	0~8 M <sup>3</sup> /H	1¼"(32A), 1½"(40A), 2"(50A) available
<b>E</b>	0~10 M <sup>3</sup> /H	1¼"(32A), 1½"(40A), 2"(50A) available
<b>F</b>	0~12 M <sup>3</sup> /H	1¼"(32A), 1½"(40A), 2"(50A) available
<b>G</b>	0~16 M <sup>3</sup> /H	1¼"(32A), 1½"(40A), 2"(50A) available
<b>H</b>	0~18 M <sup>3</sup> /H	2"(50A)
<b>I</b>	0~24 M <sup>3</sup> /H	2"(50A)

Ordering code example:

- FTA-W-B-1-1-A
- FTA = Model
- W = with paddle
- B = SS316
- 1 = 15A (½")
- 1 = NPT
- A = 0~1.5 M<sup>3</sup>/H