

DISPLACER LEVEL SWITCH

200 Two Stage Series

EDW200 – Weather Proof Type

EDX200 – Explosion Proof Type

The NEW-FLOW Displacer Level Switches are made to fit wide range applications such as pump control, waste water level and deep open tank. They are designed for high corrosive resistance and long service life. 200-Series are two stage control and easy to install.

Technical Data

Easy Installation

Wetted Parts Material: SS304, SS316, SS316L available

Housing Material: EDX- Aluminum alloy or SS316 ;

EDW- SS316 or C.S with painting

The Suitable S.G.: ≥ 0.6 (Please inform the manufacturer about the Sp. Gr. of application fluid to calculate the float size.)

Enclosure Housing: EDX- Explosion Proof: please check the ordering information
EDW- Weather Proof: IP65

Micro Switch Rating (SPDT & 2DPDT Type): 5A/125VAC, 5A/250VAC, 2A/30VDC

Max. Pressure: 50 kg/cm² @25°C ; option on request

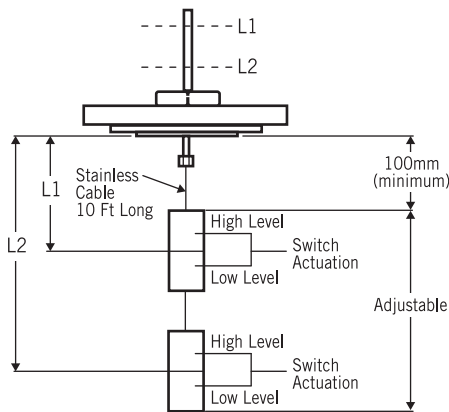
Max. Temperature: 250°C

Float Size: $\phi 60.5 \times 150\text{mmL}$ (based on Sp. Gr.=1.0)

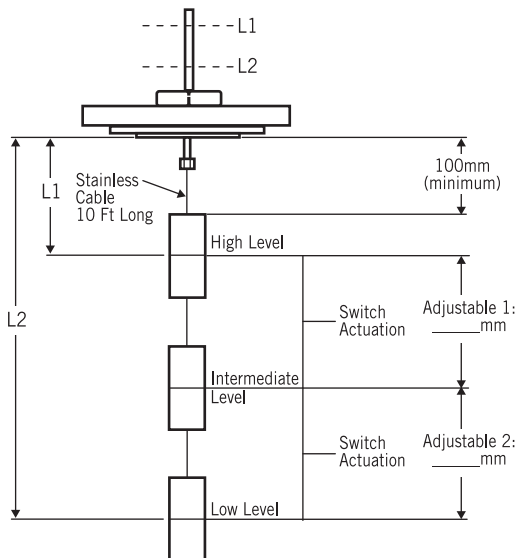
(Float size depending on the Sp. Gr. of application fluid.)

Control

Narrow Differential Model: 200



Wide Differential Model: 201



NOTE.:
Adjustable 1, 2:
Please fill in the request length.

Patent No.

M279006

Approvals:



TD0400TJ

工電(2016)第00211號

工電(2016)第00383號



Switches with UL & CSA
Recognized and File No.
E41515.



EDX200

EDW200

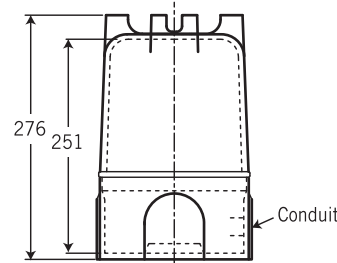
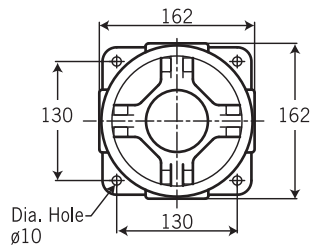
Switch Function

| Dry Contact Micro-Switch | Option (Hermetically Switch) |
|--------------------------|------------------------------|
| 1SPDT X 2 | 1SPDT X 1 |
| | |
| Dry Contact Micro-Switch | Option (Hermetically Switch) |
| (2DPDT) 2SPDT X 2 | (1DPDT) 2SPDT X 1 |
| | |

Housing Dimensions -mm

(Certificate on Housing Only)

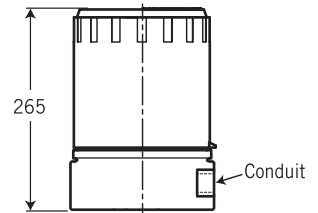
Aluminum alloy
EEx d IIC-T6, II 2 GD



EDX200

(Taiwan Explosion Proof Certification)

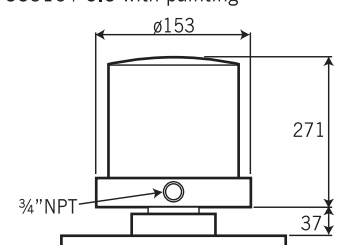
Aluminum alloy / SS316
Ex d IIB + H2 T6 Gb



EDX200

(Weather Proof Type)

SS316 / C.S with painting



EDW200

